



Central plant line planning with AREAPLAN

Manufacturing footprint software for efficient and cross-plant space utilization

Your advantages at a glance

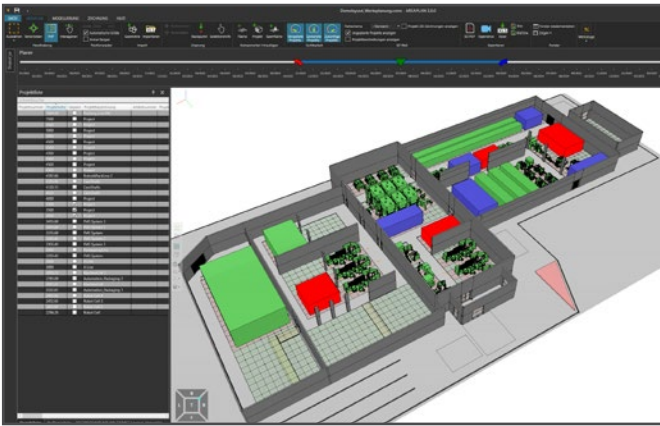
- ✓ Optimum utilization of the available floor space
- ✓ Convenient planning of space requirements in a dynamic 3D factory layout
- ✓ Spatial allocation and scheduling on one platform
- ✓ Concrete statements on the feasibility and delivery dates of projects
- ✓ Visualization of the planning status for project participants, shop floor or management

Why you should rely on the AREAPLAN footprint tool

- Efficient factory planning starts with making optimum use of the available space in the factory. This is a particular challenge for managers in production and assembly, for example,
- ✓ when planning large assembly projects with constant changes,
 - ✓ several production lines over a certain period of time or
 - ✓ large-volume products with high space requirements in a limited factory area.

Restrictions such as overall height or surface load must also be taken into account. If several plants have to be coordinated in parallel, there is another variable that makes it more difficult to determine the space requirements.

AREAPLAN is the first and only tool on the market that allows you to digitize and optimize your space allocation both spatially and over time across all factories. Equipped with extensive functions and an easy-to-use user interface, the manufacturing footprint software gives you complete transparency of current, planned and completed manufacturing and assembly projects.



The integrated, immediate restriction check prevents multiple space allocations and thus costly planning errors. Any necessary rescheduling, extensions or development of new halls can be planned, tested and visualized directly in the tool. As a result, you reduce the planning effort, achieve greater planning and investment security and increase the capacity of your factory.

Global plant planning at central level

With AREAPLAN, global plant planning can be carried out for all locations via the central planning department. Accumulate all projects such as production cells, production lines or entire production islands from all locations worldwide and see at a glance which production or assembly projects can be implemented in which plant over which period of time.



Save valuable time when determining space requirements by scheduling current and future projects in different plants in terms of space and time



Use just one tool to synchronize your IT landscape for global plant planning.



Improve the quality of your data by using a uniform working basis for all plants.



Create 100% transparency by allowing several employees to work on one platform without losing valuable work results.



Capacity utilization reports help you to make better decisions on whether site expansions or new production locations are necessary.

AREAPLAN as an ideal add-on to Visual Components, CAD, MES, APS and ERP

AREAPLAN is based on proven functions of Visual Components and can be easily integrated into the user interface of the 3D simulation software. In addition, the machine and production layouts created in Visual Components can be easily imported into AREAPLAN and reused for area planning.

AREAPLAN is also the perfect complement to CAD programs. Import CAD geometries and also display your assembly projects or machine configurations over time.

The area capacity planner can also be seamlessly connected to upstream systems such as MES, ERP, APS or PMS. By constantly exchanging data, you ensure that all systems always have access to the latest data.



Your way to AREAPLAN

DUALIS GmbH IT Solution

Factory Simulation
Breitscheidstraße 36
01237 Dresden
Germany

Telephon: +49 351 47791-0
E-mail: simulation@dualis-it.de
www.dualis-it.de

Your contact

I process your inquiries immediately and advise you competently and without obligation.

Evelin Dietrich
Telephon: +49 351 47791-630
E-mail: edietrich@dualis-it.de